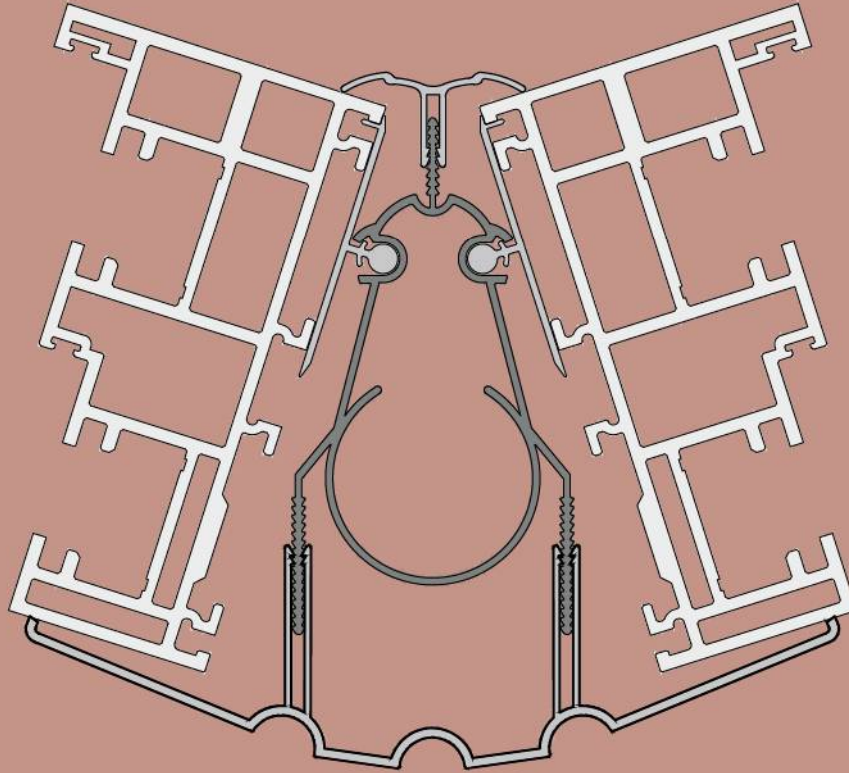


# Vs VSBAYPOLE

Variable angles for all frames 125-148mm.



<b>NAME</b>	VSBAYPOLE/VSBAYPOLE02
<b>VS FRAME DEPTH</b>	130mm - 148mm
<b>VS2 FRAME DEPTH</b>	125mm - 130mm
<b>IXX (cm<sup>4</sup>)</b>	53.39
<b>IYY (cm<sup>4</sup>)</b>	21.18
<b>FRAME DEDUCTION</b>	Varies - see website
<b>EXTERNAL TRIM</b>	VSO
<b>INTERNAL TRIM</b>	DBI/PILDT - see website
<b>UN-FOILED</b>	YES
<b>FOILED</b>	YES
<b>JACK-ABLE</b>	JACK-7
<b>FRAME ADAPTERS</b>	See page 43



Screw from outside detail  
Frames can be screw-fitted through the coupler into the frame before the trim is added. This allows pre-glazed frames to be installed.



125-148  
Frame



Jack-able  
System



DBI/PILDT

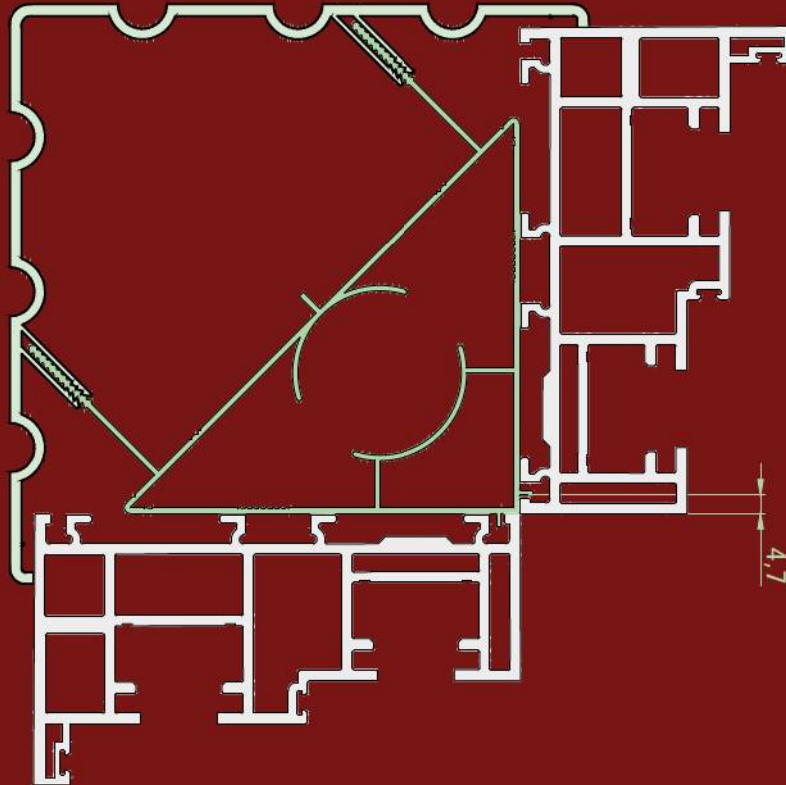
All our Jacks are tested to 9 Tonnes and are CE approved No. 0086-CPR-614908

HEIGHT	LOAD BEARING
900	Capped at 2 Tonnes
1200	
1500	
1800	
2100	
2400	

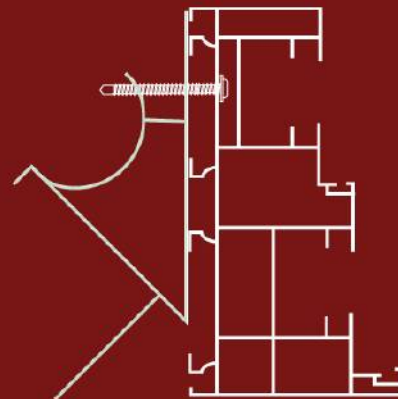


# Vs VS90ALI

90° corner post for vertical slider frames 125-148mm.



<b>NAME</b>	VS90ALI
<b>IXX (cm<sup>4</sup>)</b>	143.00
<b>IYY (cm<sup>4</sup>)</b>	69.47
<b>FRAME DEDUCTION</b>	0
<b>EXTERNAL TRIM</b>	VS90
<b>INTERNAL TRIM</b>	N/A
<b>UN-FOILED</b>	YES
<b>FOILED</b>	YES
<b>JACK-ABLE</b>	JACK-7



Screw from outside detail  
Frames can be screw-fitted through the coupler into the frame before the trim is added. This allows pre-glazed frames to be installed.



125-148  
Frame



Jack-able  
System

All our Jacks are tested to 9 Tonnes and are CE approved No. 0086-CPR-614908

HEIGHT	LOAD BEARING
900	Capped at 2 Tonnes
1200	
1500	
1800	
2100	
2400	

